

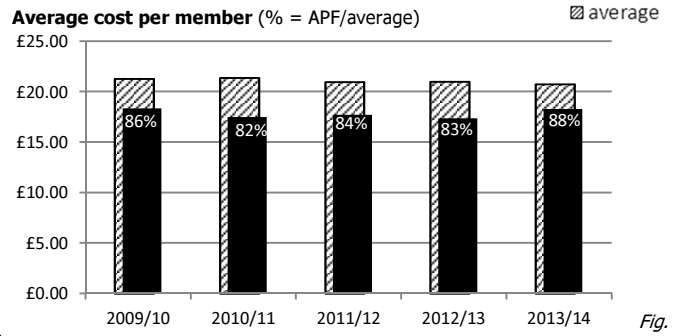
# Appendix 8A: Admin Performance Summary – 5 YR Comparator

## Background

This page summarises Avon Pension Fund's performance from the administrative perspective over the past five years.

Comparisons are drawn with other funds based on information gathered by CIPFA.

## Cost per member

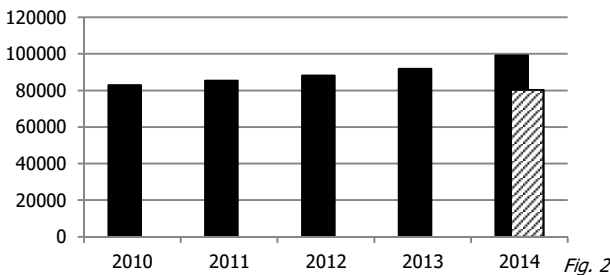


## Membership

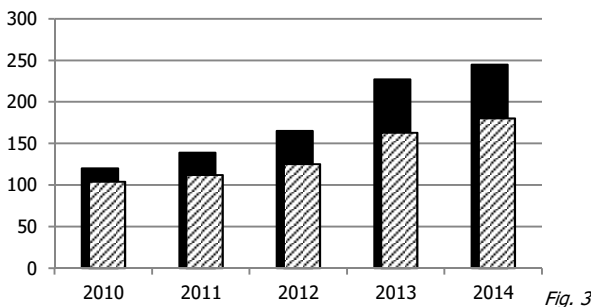
(snapshot at 31 March each year)

### Number of members

(comparison data only available for 2014)

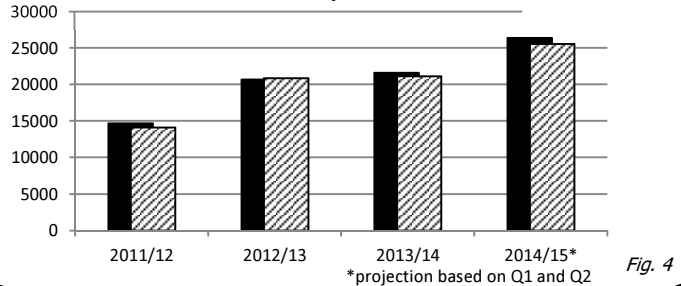


### Number of employers

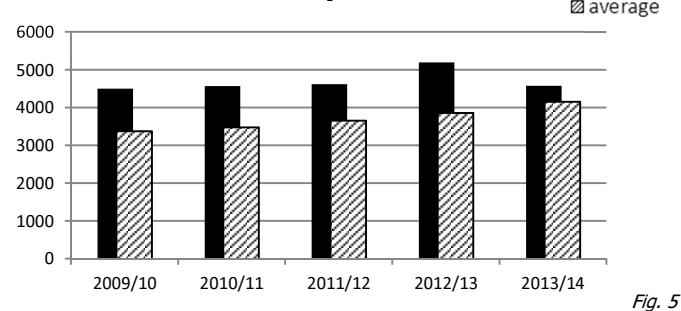


## Workload

### Number of cases created and completed



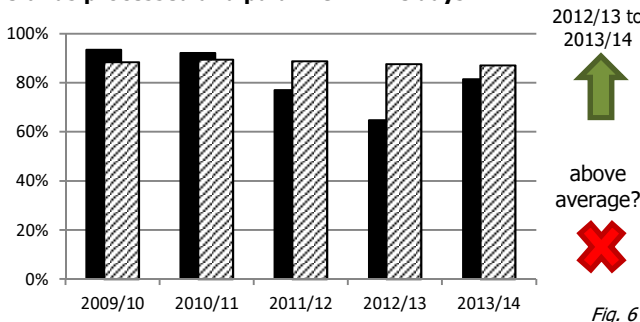
## Number of members per FTE staff



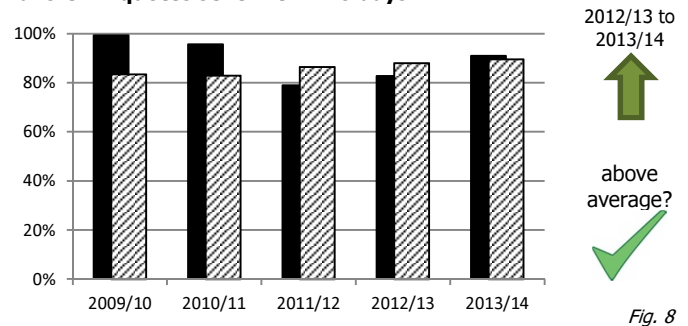
## Performance indicators

APF's performance compared with average performance against four key indicators as reported by CIPFA.

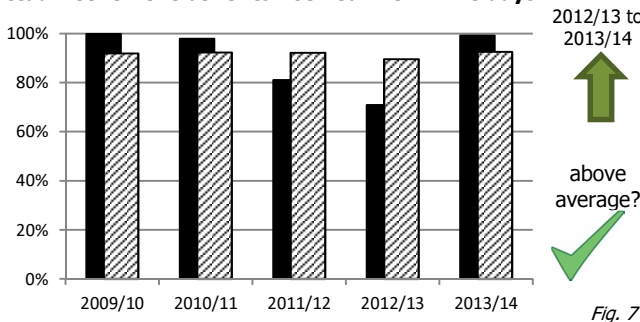
### Refunds processed and paid within five days



### Transfer in quotes sent within 10 days



### Actual retirement benefits notified within five days



### Transfer out quotes sent within 10 days

